

**PART TWO OF THE WEBINAR SERIES:
'INSPIRING SOUTH AFRICAN WOMEN OF NEUROSCIENCE'**

IN THIS FUN, INTERACTIVE WEBINAR, PANELISTS WILL SHARE THEIR ACADEMIC JOURNEYS, RESEARCH, AND CAREERS. THE AIM IS TO INSPIRE SOUTH AFRICAN FEMALE STUDENTS, FROM HIGH SCHOOL TO UNIVERSITY, TO STUDY AND PURSUE CAREERS IN NEUROSCIENCE!



13 August 2021

> REGISTER NOW



15:00 - 16:15

MEET THE PANEL



**Professor
Nafisa Casimjee**



**Dr.
Busiswe Maseko**



**Dr.
Shona Fraser**



**Dr.
Sashrika P-Addinall**



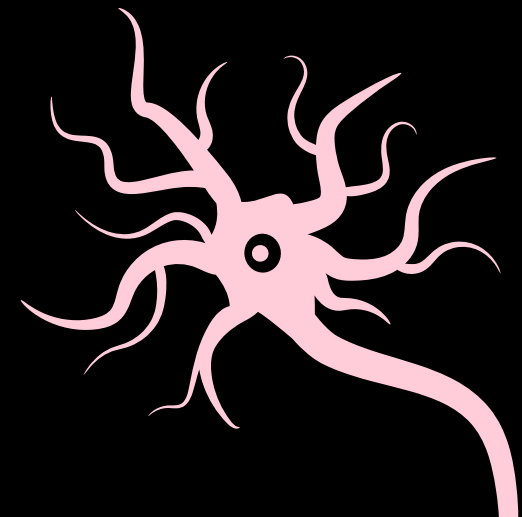
**Dr.
Amélie Beaudet**



**Host:
Dr. Sahba Besharati**

FOR BIOSKETCHES

CLICK HERE



UNIVERSITY OF THE
WITWATERSRAND,
JOHANNESBURG

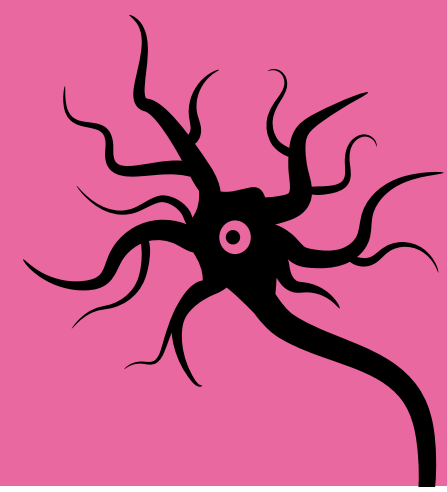


100
1922
2022



WITS NeuRL
NEUROSCIENCE RESEARCH LABORATORY
University of Witwatersrand

**WEBINAR ENQUIRIES:
VICTORIA.WILLIAMS@WITS.AC.ZA**



Schedule



15:00 - 15:15

WELCOME STUDENTS AND PANELISTS

HOST WELCOMES AND INTRODUCES STUDENTS TO THE WOMEN ON THE PANEL.

15:15 - 15:45

DISCUSSION WITH WOMEN ON THE PANEL

THE PANEL DISCUSSES THEIR RESEARCH AND CAREERS IN NEUROSCIENCE.

15:45 - 16:15

QUESTION AND ANSWER SESSION

STUDENTS CAN ASK THE PANELISTS QUESTIONS ABOUT THEIR RESEARCH, STUDIES, AND CAREERS AS 'WOMEN OF NEUROSCIENCE'.

UNIVERSITY OF THE
WITWATERSRAND,
JOHANNESBURG



100
1922
2022



WITS NeuRL
NEUROSCIENCE RESEARCH LABORATORY
University of Witwatersrand